

Artificial Intelligence Strategy of the City of Madrid

Antonio García de la Paz - Digital Office



01.

AI Act



Risk Classification



UNACCEPTABLE RISK

Uses of AI that are contrary to EU values, violate fundamental rights, harm human health or the environment.

HIGH RISK

A limited number of AI systems defined in the proposal within 8 areas of application, creating an adverse impact on the safety of individuals or their fundamental rights.

LIMITED RISK

AI systems that interact with humans, such as chatbots, user recommendation services, and, in addition, AI-generated text published for the purpose of informing the public on matters of public interest should be labelled as artificially generated. This also applies to audio and video content that constitutes deep fakes.

MINIMAL RISK

The vast majority of AI systems fall into this category, where these new standards are not involved.

GENERAL PURPOSE IA (GPAI)

Foundational models trained with a large amount of data that shows significant generality and is capable of performing a wide range of tasks.



Public and private actors

Any of these actors, whether inside or outside the EU, **provided that their use affects the European market or its citizens.**



AI system providers

Any supplier containing and/or distributing such systems.



Users of AI systems

Users who have installed such a system on any of their computer platforms.

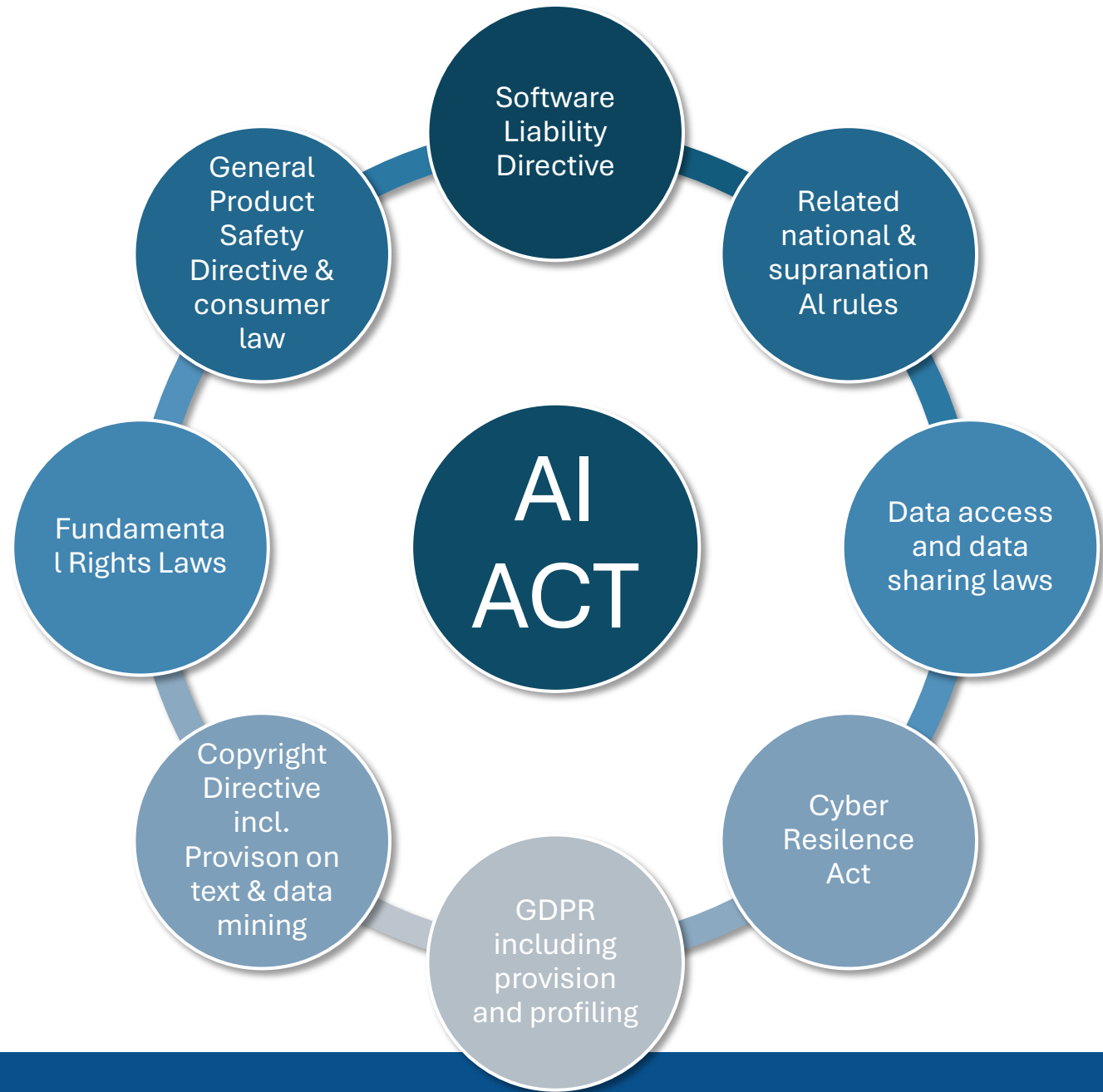


This Act does NOT apply to...

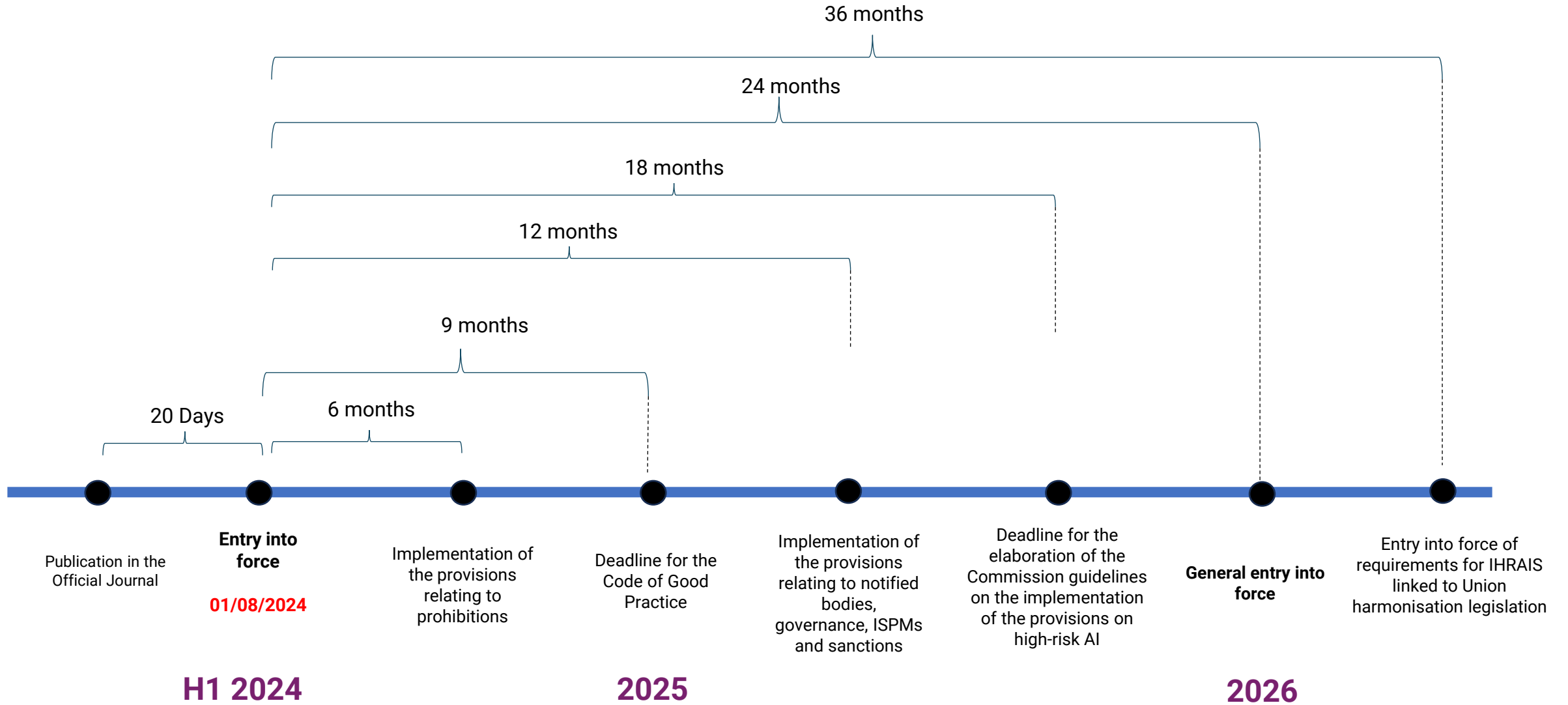
Private use for non-professional purposes.



Regulation applying to AI Act



Roadmap



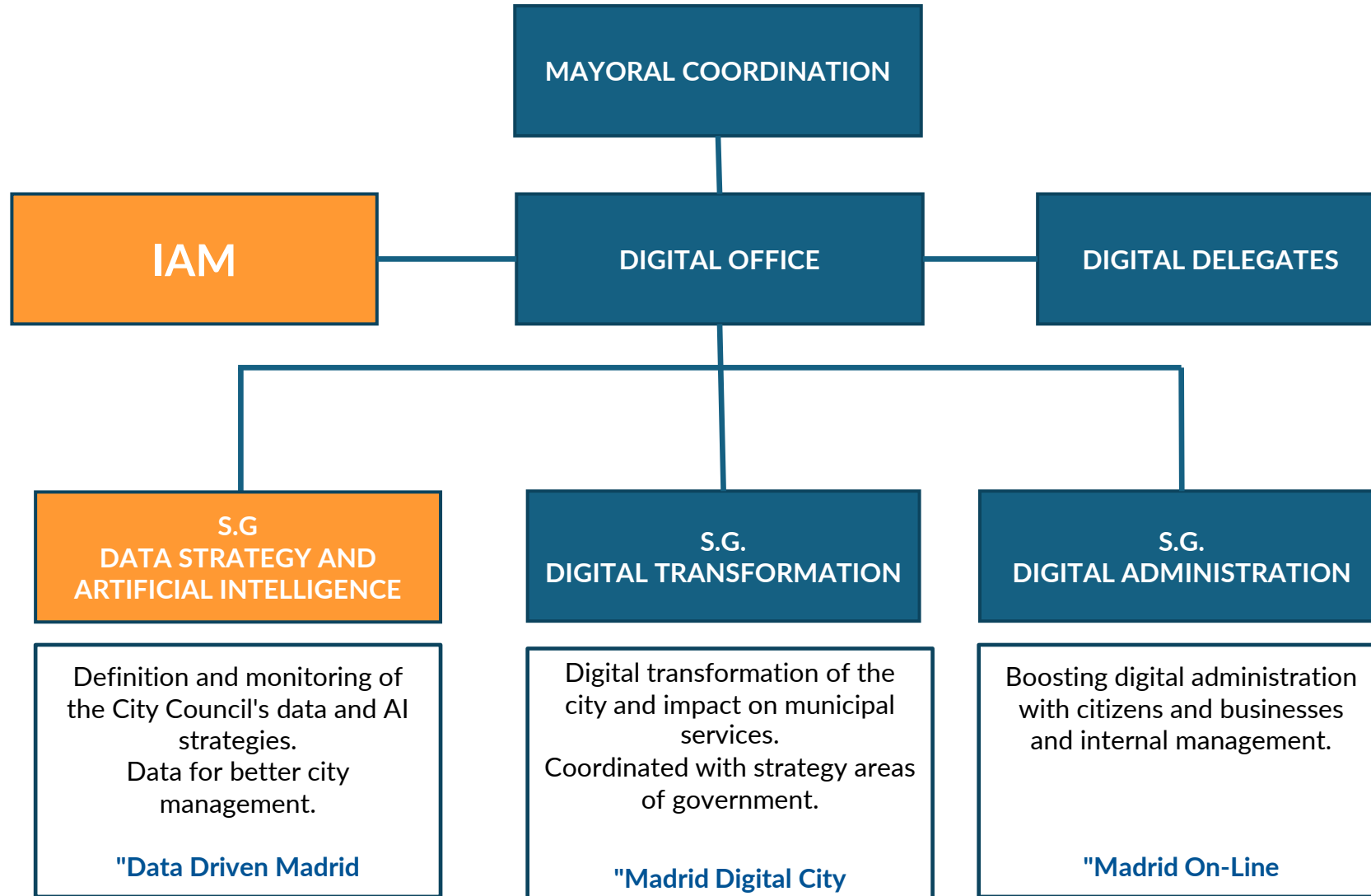


02.

Digital Office



DIGITAL OFFICE



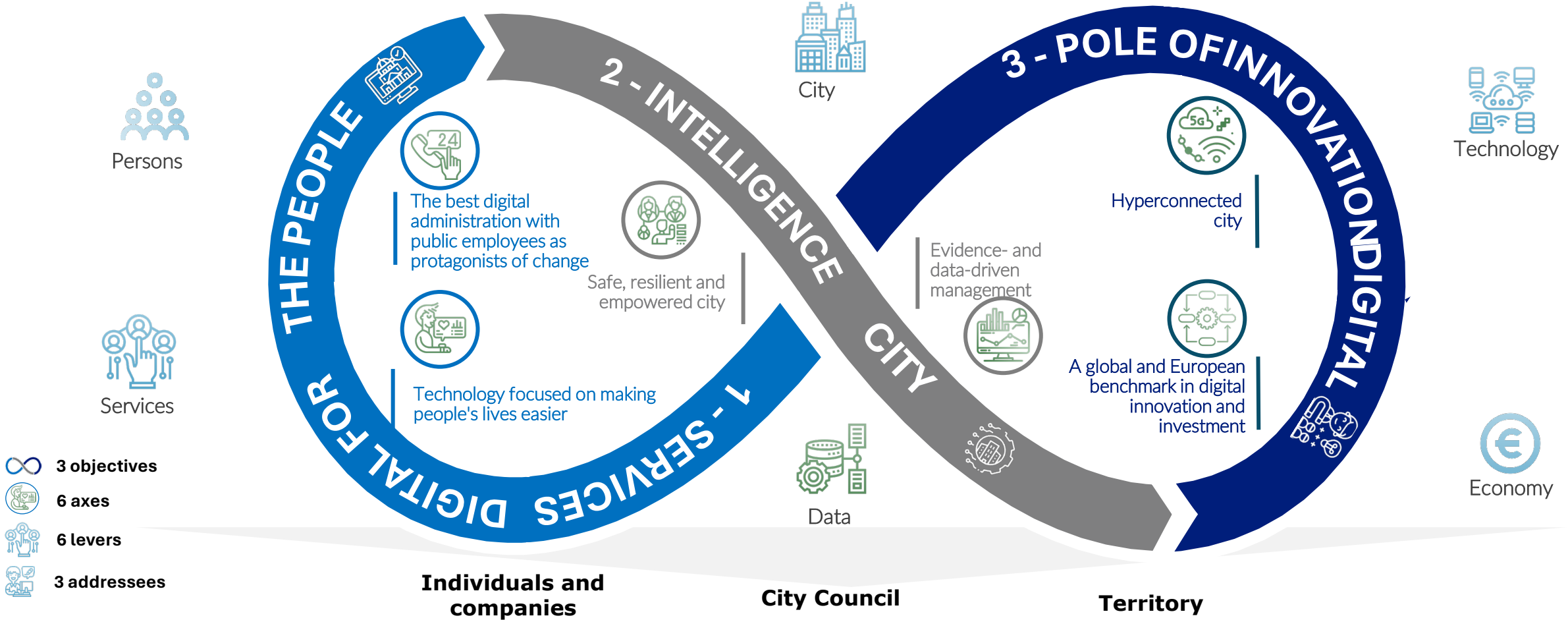


03.

Strategy

Promotes digitalisation across the board in Madrid

The set of strategic objectives and axes is driven and impacted by 6 enabling levels of the strategy, which, to a greater or lesser extent, foster the digital transformation of the City.



MUNICIPAL PROGRAM FOR ARTIFICIAL INTELLIGENCE AND

ROBO CITY MADRID

11/30/



Artificial Intelligence Itinerary Strategic Framework

Because Digital is Capital

Madrid, Digital

new version in progress

LICITUD

Ensuring compliance with all applicable laws and regulations.

ETHICS

Respecting and ensuring adherence to ethical principles and values.

ROBUSTEZ

Both technically and socially, as AI systems, even if well-intentioned, can cause accidental damage.



REAL IMPACT

TRANSPARENCY



ETHICS

ENFORCEABILITY



CAPACITY BUILDING

COORDINATION



MAIA - AI Strategy in the city of Madrid

INNOVATION AND ENTREPRENEURSHIP

- Relations with companies.
- Establishment of funding mechanisms
- Management of aid to companies.

DIGITAL OFFICE

- Leadership and Strategy
- Alignment with Digital Transformation strategy
- Data ethics and accountability

IAM

- Technology Centre: Platform + Technology Framework
- Project implementation and coordination

Responsible

External Community



Principles



Platform



Internal Community





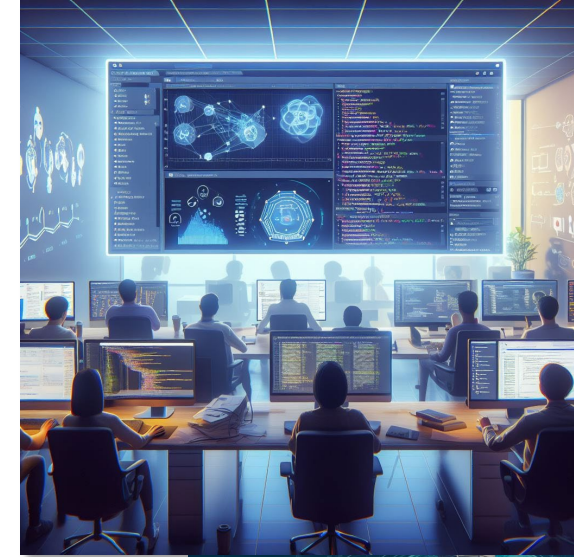
Progress...



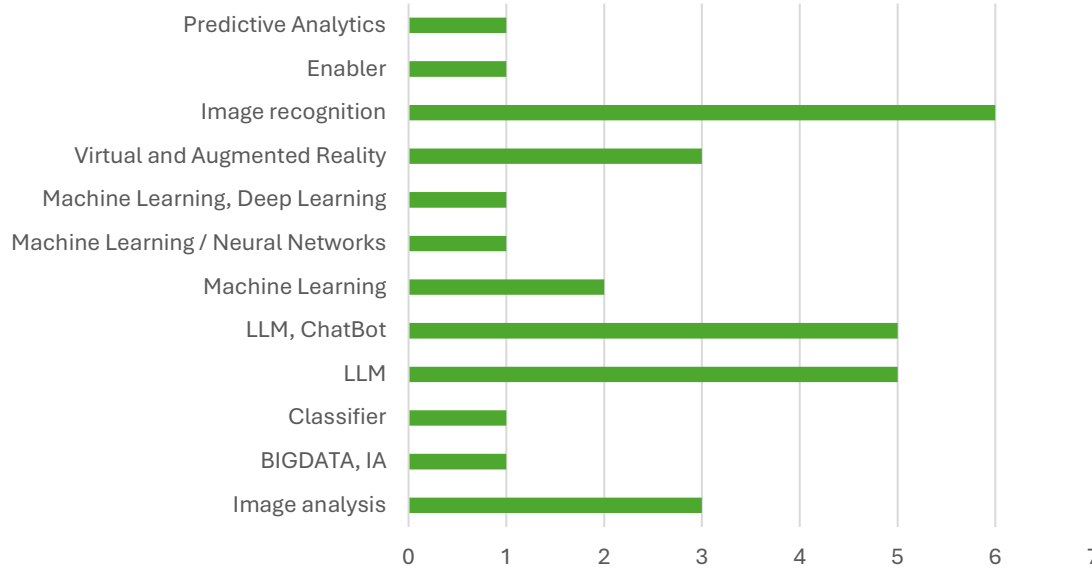


Creation of an AI Community

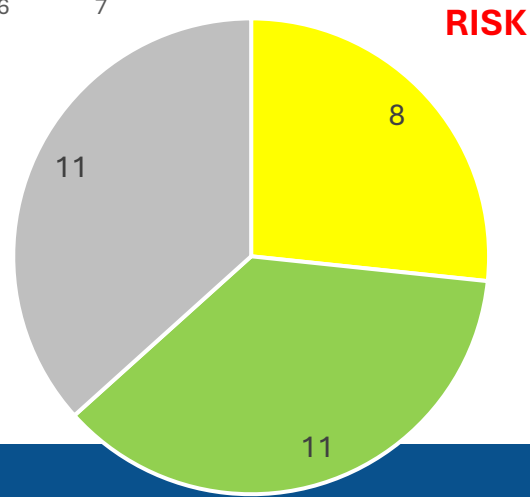
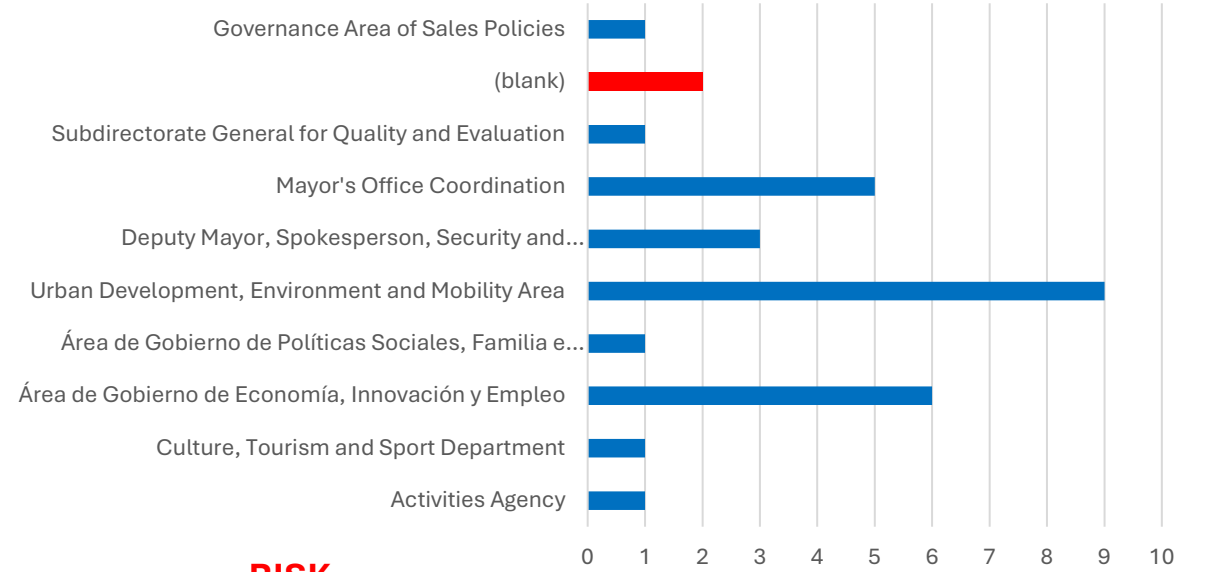
- **Internal community:** The possibilities of AI projects should be known by all municipal areas.
- **Competence centre and best practices** for the development of use cases.
- **External community:** companies, universities and associations.
- **AI talent and training.** Participation in industry Meetups.



by TECHNOLOGIES USED



by AREAS OF GOVERNMENT



- LIMITED RISK
- MINIMAL/NO RISK
- (blank)





IA Project Implementation Methodology



- Monitoring of the entire AI project lifecycle
- Receipt of proposals
- Prioritisation of candidates
- Selection criteria
- New model of project governance. IAM Platform + Drivers in governance areas.
- Implementation
- Monitoring of the objectives pursued in the selection criteria



MAIA - Madrid Artificial Intelligence



63

Proposals

17

Proofs of concept

3

In the implementation phase

MOST REQUESTED DEMANDS

- RAG (Retrieval Augmented Generation) **technologies** based on data available in the City Council from various sources:
 - Web Scrapping
 - PDF documents.
- **Classification** by machine learning algorithms (e.g. suggestions and complaints).
- **Automation of document analysis** (e.g. identification of drivers in traffic reports).
 - Analysis of forms
 - OCR (handwritten text)
 - Cross-over of information between systems

INFRASTRUCTURES USED

- Own HW vs. Cloud Services.



Capital
Digital

thank you



Capital
Digital

