

Taxlab: Data as energy for tax modernisation

Ignacio Durán Boo

Technical Adviser to the Directorate of the Tax Agency Madrid



Capital
Digital

01.

The Tax Agency of the Madrid City Council (ATM)



The Tax Agency of the Madrid City Council (ATM)

Madrid as a "big city"

Agency in charge of collecting all taxes and other public revenues of the Madrid City Council.

We raise €3,294 million annually



- 3,3 M
- Population



- 2,2 M
- Real estate



1,8 M
Vehicles



316 K
Companies



5,1 M
Taxpayers



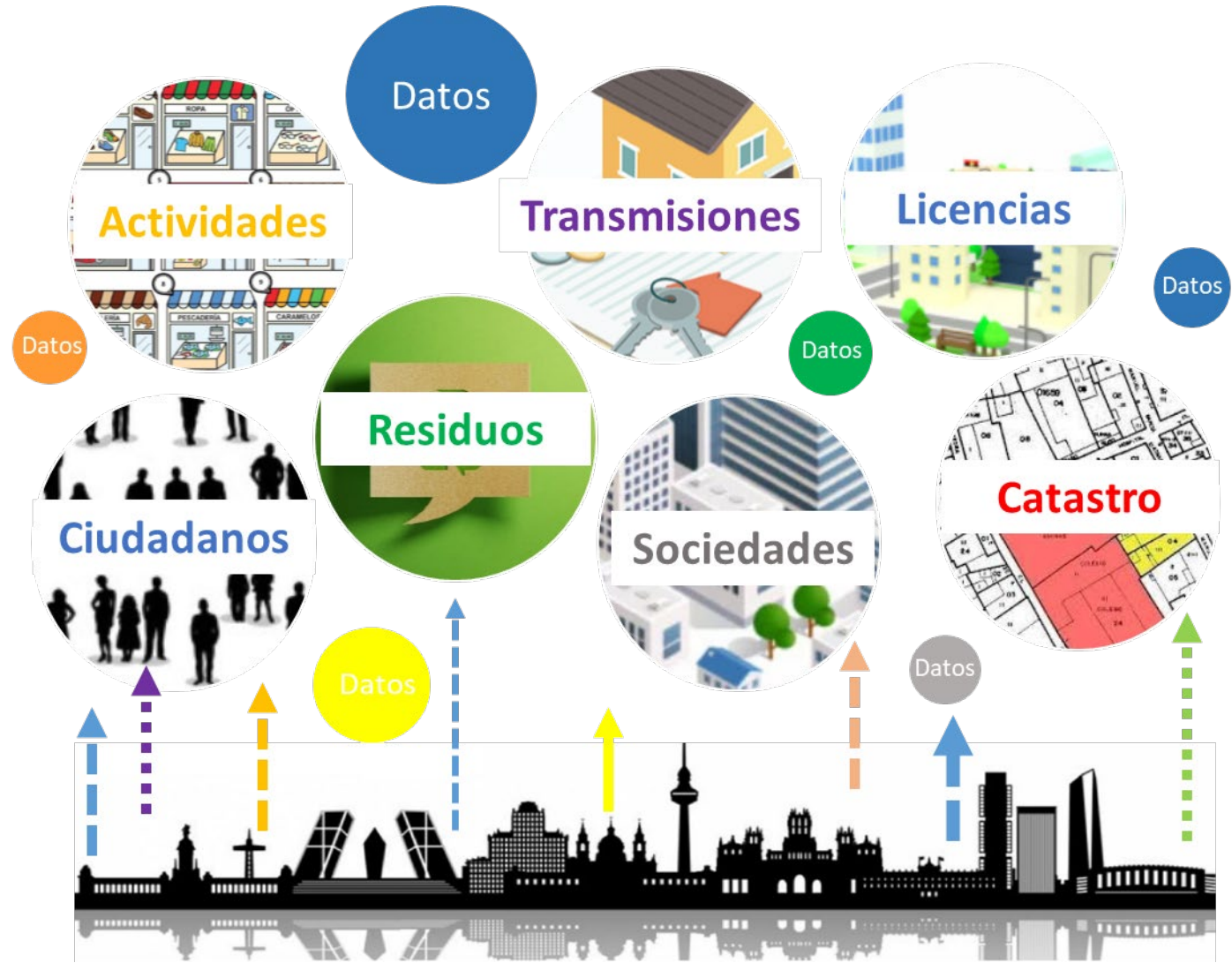


Madrid as "Big Data"

How can we use all this data to better serve taxpayers?

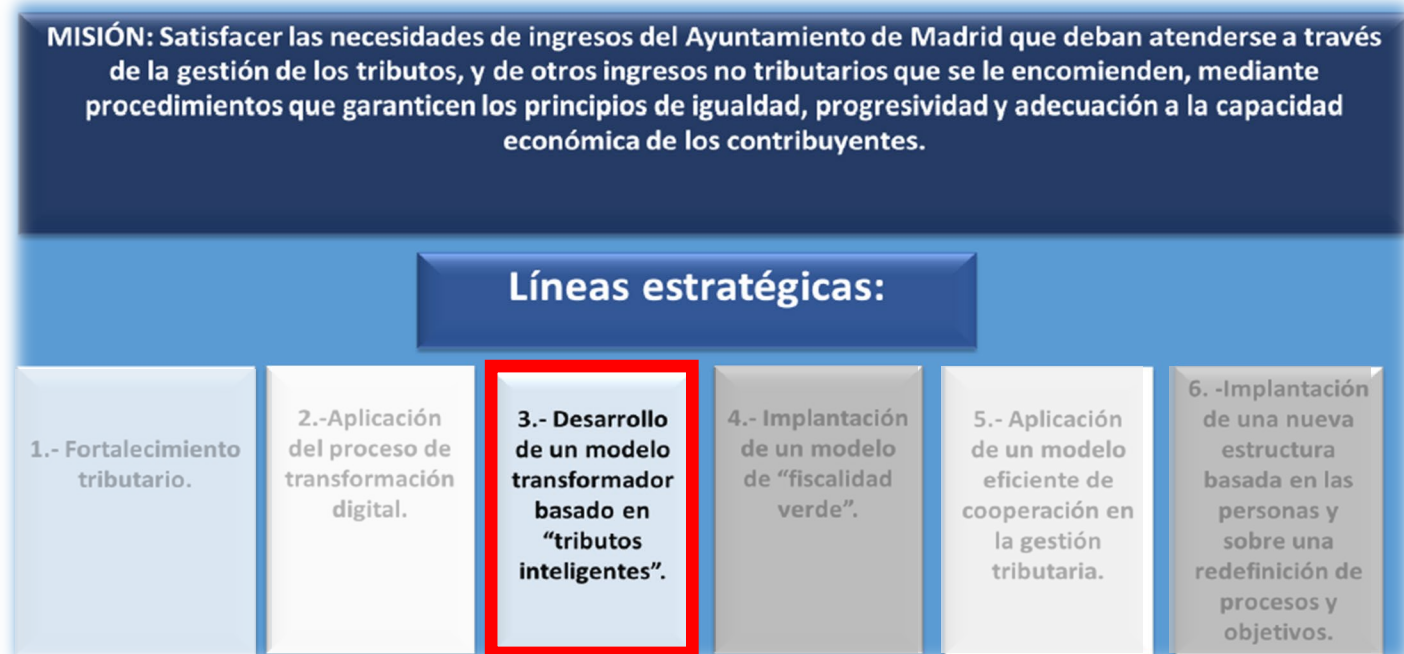


Data-driven and technology-driven taxation. Making it easy for those who want to contribute and difficult for those who don't.





The Dato strategy in the MTA



Towards a highly technological, connected and people-centred MADRID Tax Agency: citizens and employees

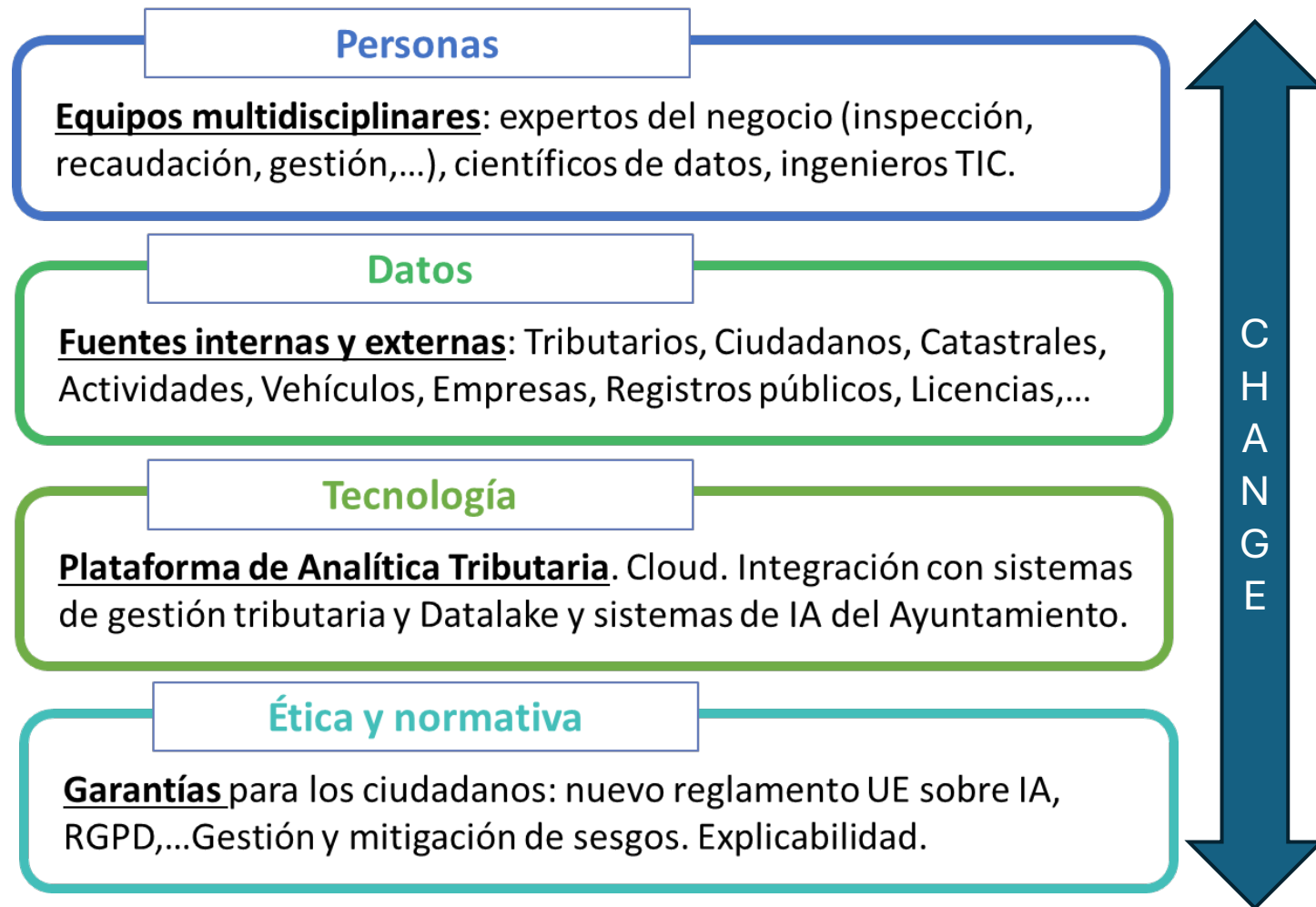
02.

The Tax Laboratory (TAXLAB)



The MTA Tax Laboratory

How do we put it into practice?





Results

- Simulation of scenarios in seconds.
- With total precision.
- Incorporating external factors (real estate, social, health, etc.).

Accuracy in revenue forecasting



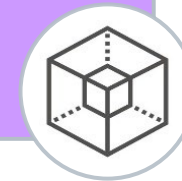
- Reduction of manual action: in one day what used to take a month to do
- Use of big data and machine learning for the discovery of fraud patterns.

Boosting the fight against fraud



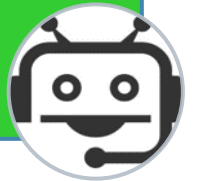
- Tax policies more in line with Madrid's reality.
- Tax policies that are more flexible to changes in the city.
- Real-time monitoring for better adjustment to deviations.

Designing taxes in line with reality



- Use of generative AI to support public employees, piloting through technology the generational change of the workforce.
- Use of digital taxpayer assistance to provide simpler, more guided and automated services.

Help and assistance to employees and citizens



The aim of these tools and services is to support and monitor the application of tax policies adjusted to the changing reality of the city, reduce tax fraud and simplify relations between citizens and the administration, in order to make Madrid a better city for everyone.



One example: the waste rate

What data do I have?
What is its quality?
can it be improved?

The polluter pays!

How is it possible to adjust the amount with the required precision?

How will it affect citizens?



Waste

Weight of waste generated in the different fractions.
Characterisations (% unsuitable)



Citizens

Census of inhabitants of Padrón
List of large families

Activities

Census of Premises and Economic Activities. Tourist dwellings



Real estate

Cadastral values. Surface areas
Uses. Properties without horizontal division



Tributaries

IBI registration IBI registration TRUA registration

